



0233793059 - 035425757 - 01032001577



178 G New Second Gate - Pyramids Garden



Fkahany El-Nasr St- United Towers - Kafr Abdo



info@cairoreef.com



www.cairoreef.com

ADDING GREEN TO YOUR LIFE.



CAIRO REEF
مش مجرد مزرعة

CATALOGUE





ABOUT CAIRO REEF

At **Cairo Reef** Establishment, we are committed to creating a better future for generations to come. Our team of experts is dedicated to providing top-quality agricultural solutions that benefit both the environment and the community.

With a focus on innovation and excellence, **Cairo Reef** Establishment has quickly become the first choice for agricultural development in the area. In a stunning combination of luxury accommodation and sustainable farming practices, **Cairo Reef** is the company's flagship development.

**CHOOSE GREEN LIVING,
BUILD A BETTER FUTURE.**



“

LIVING IN THE
FUTURE,
NATURALLY
GREEN.

”

OUR STORY

At **Cairo Reef**, we wish to give you and your family a place to develop a better future and make memorable memories. We not only help secure your future but also your home and land, as well as your food, allowing you to enjoy a complete life. With an uncompromising dedication to ensuring the future, but Ezbat Cairo went above and beyond the call of duty.

In light of the global food crisis and the uncertainty of safe investments, our executives decided to take a risk." Cairo Reef aimed to be the region's top agricultural developer when it established Ezbat Cairo.

We recognized that true fulfilment comes from sources other than financial stability. It was all about cultivating a sense of belonging, protecting homes and lands, and ensuring access to nutritious, sustainable food. We imagined a life in which families might thrive, loving the present while planning for the future. As for, we are constructing rural resorts for you and your family that will protect your future and allow you to invest in what you want.





Adding
**GREEN TO
YOUR LIFE**

ABOUT US

Ezbat Cairo is one of Cairo Reef's successful projects that guarantees a sustainable and nature-friendly life. The project offers various investment opportunities, such as agricultural investments, animal production, poultry, palm trees, and greenhouse cultivation.

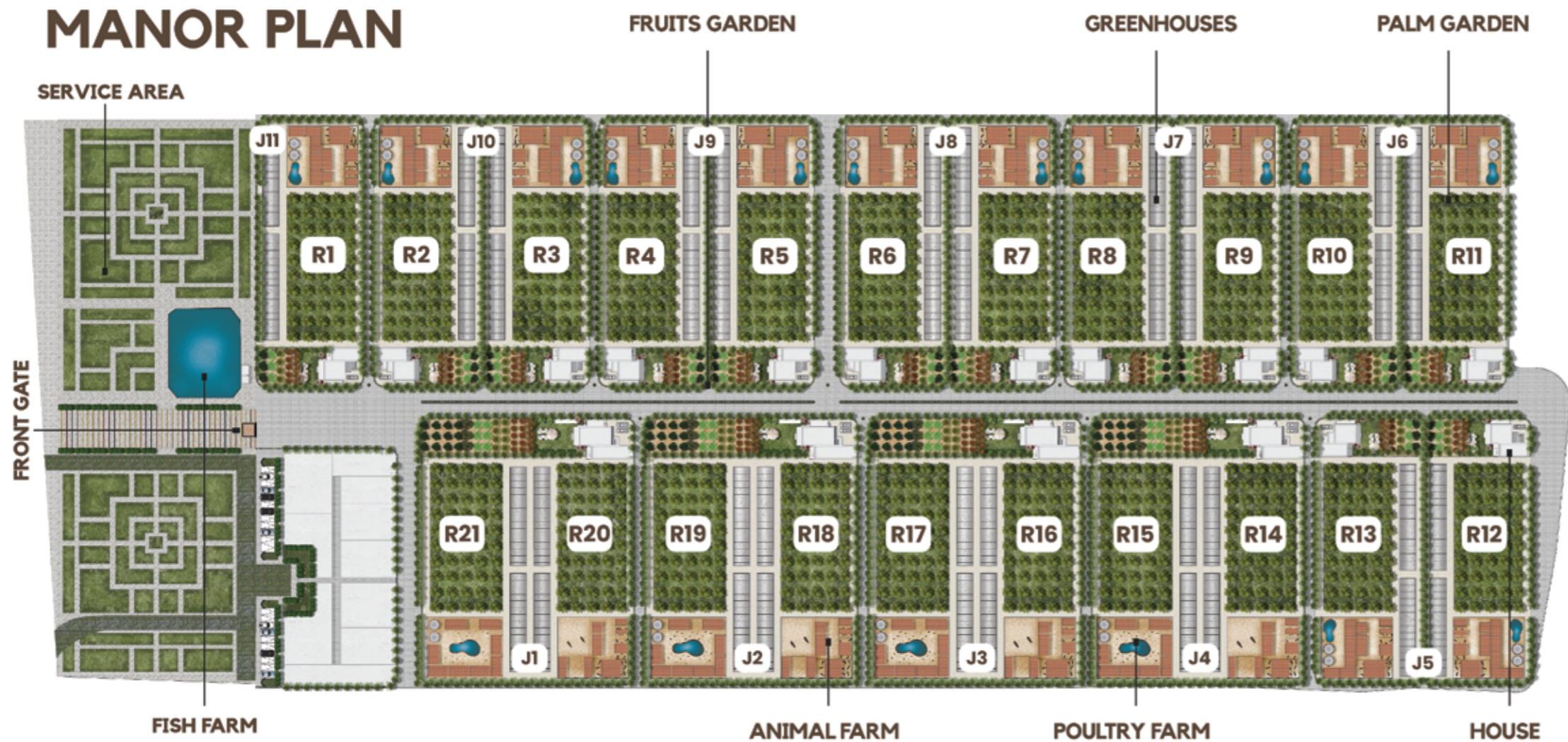
The project is named "**Ezbat Cairo**" because we want to redefine the traditional meaning of "**Ezba**" in Egypt. Generally, an "**Ezba**" covers between 40 and 50 acres in Egypt, while it can cover between 5 and 6 acres in Europe. By creating a model that is suitable for smaller land sizes ranging from 1 to 2 acres, we redefined the concept of "**Ezba**". Our aim is to enable people to invest in agriculture and rural life without needing a large amount of land.



COMBINING RURAL LIVING WITH INVESTMENT OPPORTUNITIES



MANOR PLAN



WHAT WE OFFER:

We do not only offer you an investment project or a house; we also offer you an investment in your life, yourself, and your family. Our manors are not merely ordinary manors; they are secured with a remarkable security system for providing food. Our return guarantees you an increase in income as well as a great luxury in a clean, green environment free of pollution.



Animal Farms:

We have animal and poultry farms that produce diversified food sources that can enable customers to embrace a self-sustainable lifestyle.

Each farm is equipped with isolation and treatment rooms for the animals, ensuring their well-being. There is also a designated place for slaughter on the premises



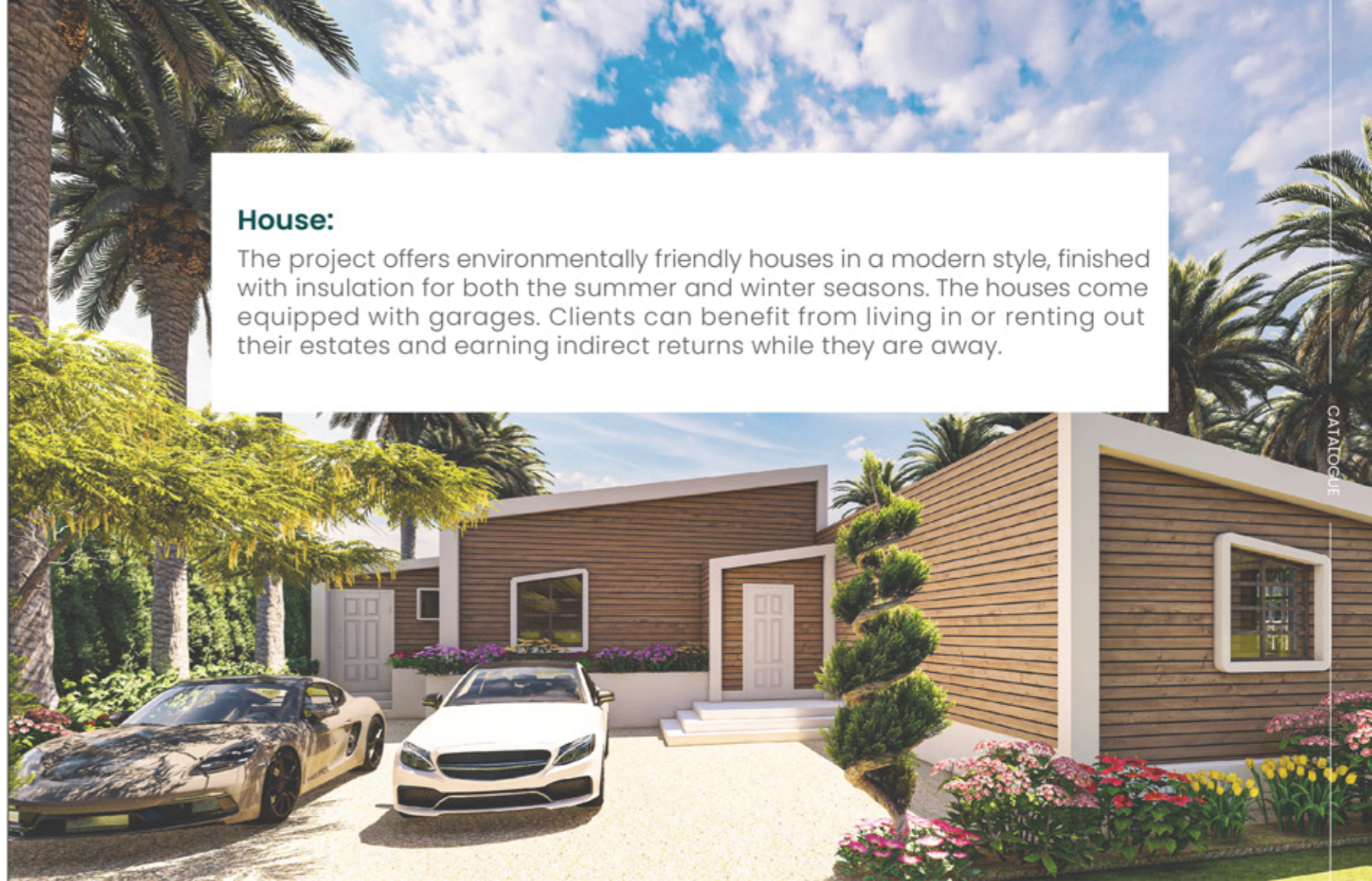
Agricultural Production:

The project achieves self-sufficiency and reduces the impact of food crises by producing essential commodities. Perfectly landscaped gardens enhance the beauty of the manor. You can appreciate the harmony of nature right at their doorstep.

WHAT WE OFFER

House:

The project offers environmentally friendly houses in a modern style, finished with insulation for both the summer and winter seasons. The houses come equipped with garages. Clients can benefit from living in or renting out their estates and earning indirect returns while they are away.



OUR FACILITIES:



ANIMALS FARM



POULTRY FARM



PALM TREES



GREEN HOUSES



FRUITS GARDENS



ISOLATED HOUSES



GARAGES



MODERN STYLE



SOLAR ENERGY

FEATURES THAT YOU CAN ADD



SWIMMING POOL



GARDENS WITH
GRAPE CUBES



A UNIQUE WAY OF LIFE

CATALOGUE



CATALOGUE

SELF-SUFFICIENCY

OUR project offers the chance to become part of a vibrant and supportive community. We embrace the principle of self-sufficiency. Every day is an opportunity to grow a little more of your food



SECURITY

In Ezbat Cairo, a secure environment awaits you and your family.

You can do various recreational activities and engage in outdoor pursuits such as gardening, leisurely walks amidst the palm trees, or even creating your own outdoor, with a spacious area for hosting gatherings for family and friends.



INVESTMENT OPPORTUNITY

The manor in Ezbat Cairo represents a valuable investment opportunity. The property's unique combination of features, such as the house, animal farm, poultry farm, palm trees, fruit trees, and greenhouses, can provide multiple revenue streams. you can explore potential business ventures related to farming, animal husbandry, or even eco-tourism.



GREEN LIFE

Our aim is to enable people to live a natural, healthy life. We surround you with a green heaven, free from pollution.



YOUR FUTURE IS HERE

There is nothing better than fresh farm air, so we prepare nature living for you and your family.



**CONNECT WITH NATURE,
RELAX, AND FEEL THE PEACE.**



Our expert team

Our team of professionals at **Ezbat Cairo** manages and cares for your farm. Through a deep understanding of agricultural practices, we ensure farms' productivity and success. Our expertise with these individuals contributes to the success of Ezbat Cairo in creating a sustainable agricultural community. Additionally, we have a team of experienced veterinarians and animal care specialists who are dedicated to providing exceptional care for their diverse range of animals.

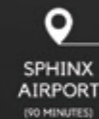
**BUILD A SUSTAINABLE
FUTURE FOR YOUR FAMILY.**



EVERY DAY IS AN OPPORTUNITY
TO GROW A LITTLE MORE OF YOUR FOOD.

THE HAPPIEST FAMILIES
LIVE IN NATURE.





SPHINX
AIRPORT
(90 MINUTES)



SHEIKH ZAYED
CITY
(63 MINUTES)



THE GREAT PYRAMID
OF GIZA
(50 MINUTES)



GRAND EGYPTIAN
MUSEUM
(30 MINUTES)



6TH OF
OCTOBER CITY
(30 MINUTES)



EXPRESS TRAIN
STATION



CAIRO REST
HOUSE



EZBAT CAIRO



THE 5TH
SETTLEMENT
(60 MINUTES)

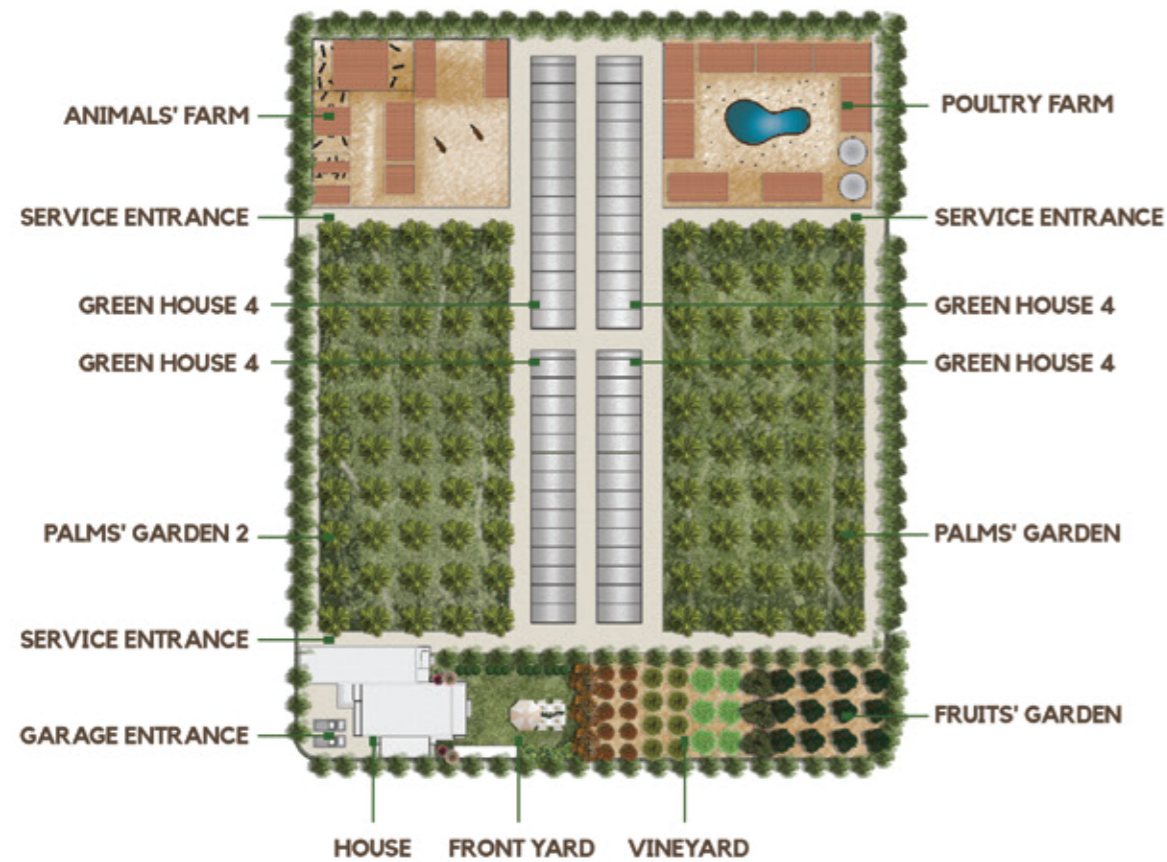
- THE CENTRAL LOCATION OF EZBAT CAIRO NEAR CAIRO AND GIZA PROVIDES INHABITANTS WITH ACCESS TO METROPOLITAN SERVICES, ECONOMIC POSSIBILITIES, AND CULTURAL ATTRACTIONS WHILE STILL ENJOYING RURAL TRANQUILITY
- WHILE ENJOYING THE SERENITY OF A RURAL RETREAT, RESIDENTS OF OUR PROJECT ENJOY EASY ACCESS TO URBAN AMENITIES, EMPLOYMENT OPPORTUNITIES, AND CULTURAL ATTRACTIONS.
- OUR PRIME LOCATION OFFERS MORE THAN JUST CONVENIENCE. A SERENE ENVIRONMENT SURROUNDED BY LUSH GREENERY AND SPACIOUS OPEN SPACES AWAITS YOU IN EZBA CAIRO.

MORE THAN JUST A FARM

Ezbat Cairo has two models, each with its own character and unique characteristics, allowing you to choose the suitable model for your needs. There are two models, Jasmine and Rose.

JASMINE MODEL

10000 M²



NO.	DESCRIPTION
1	MAIN ENTRANCE
2	FRONT YARD
3	DOG'S HOUSE
4	HOUSE
5	BACK YARD
6	FRUITS' GARDEN
7	VINEYARD
8	PALMS' GARDEN 2
9	GREEN HOUSE 4
10	ANIMALS' FARM
11	POULTRY FARM
12	SERVICE ENTRANCE
13	GARAGE'S ENTRANCE



A GREENER,
HEALTHIER
PLANET
FOR YOU.

JASMINE MODEL

Jasmine model can be a life-changing decision that offers a wide range of benefits. It's a chance to connect with nature. It presents a compact option that maintains the essence of rural living and incorporates all the amenities and advantages.

YOUR PROPERTIES

ANIMAL FARM



YOUR HOUSE 200m

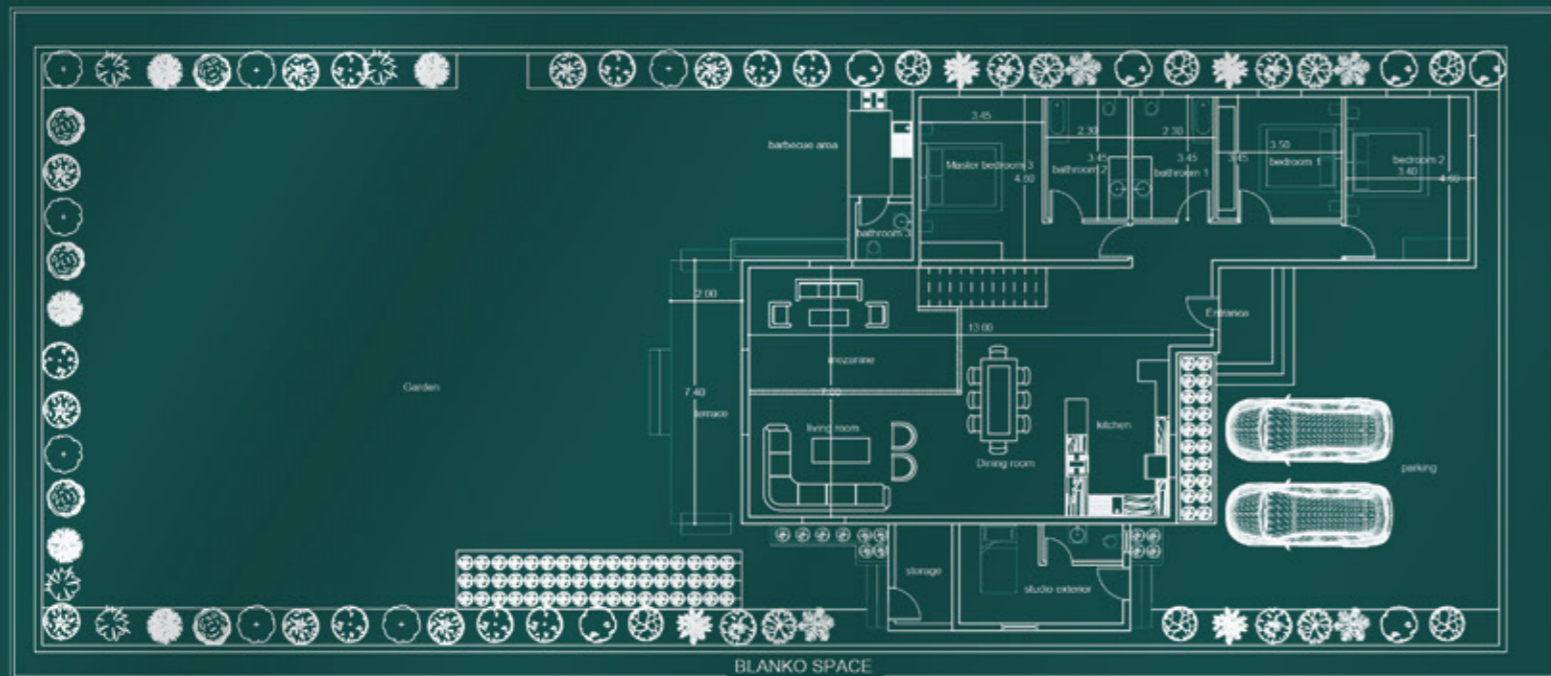
POULTRY FARM



AGRICULTURE



HOUSE PLAN



- Garden
- Terrace
- Studio exterior
- Living room
- Dining room
- Kitchen
- Parking
- Bedrooms 2
- Bathrooms 2
- Master room
- Mezzanine
- Storage
- Barbecue area



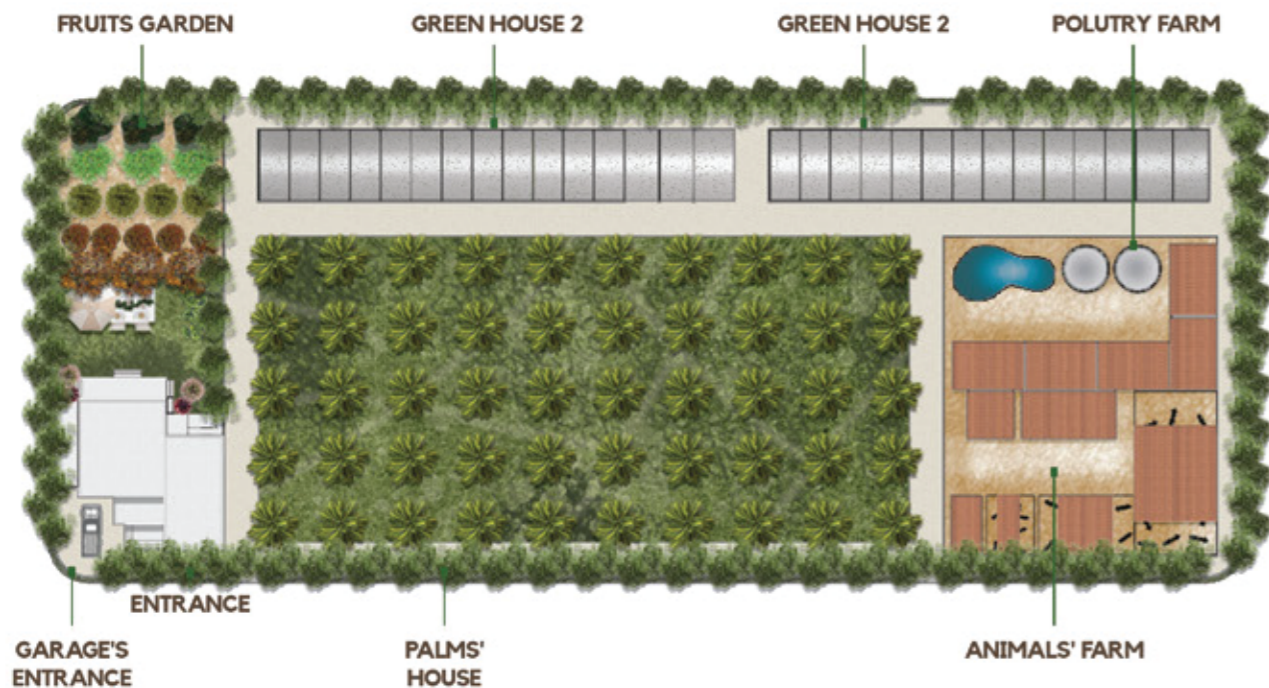
JASMINE MODEL

260 METER

ROSE MODEL

5000 M²

CATALOGUE



NO.	DESCRIPTION
1	MAIN ENTRANCE
2	FRONT YARD
3	DOG'S HOUSE
4	HOUSE
5	BACK YARD
6	FRUITS' GARDEN
7	GREEN HOUSE 2
8	PALMS' HOUSE
9	POLUTRY FARM
10	ANIMALS' FARM
11	GARAGE'S ENTRANCE

BRINGING NATURE CLOSER TO YOUR KITCHEN TABLE.



ROSE MODEL

We provide you with the most suitable space for living and investment on one acre. Rose Model is the most suitable solution for leading a fulfilling rural life and earning a satisfying profit margin.

YOUR PROPERTIES

ANIMAL FARM



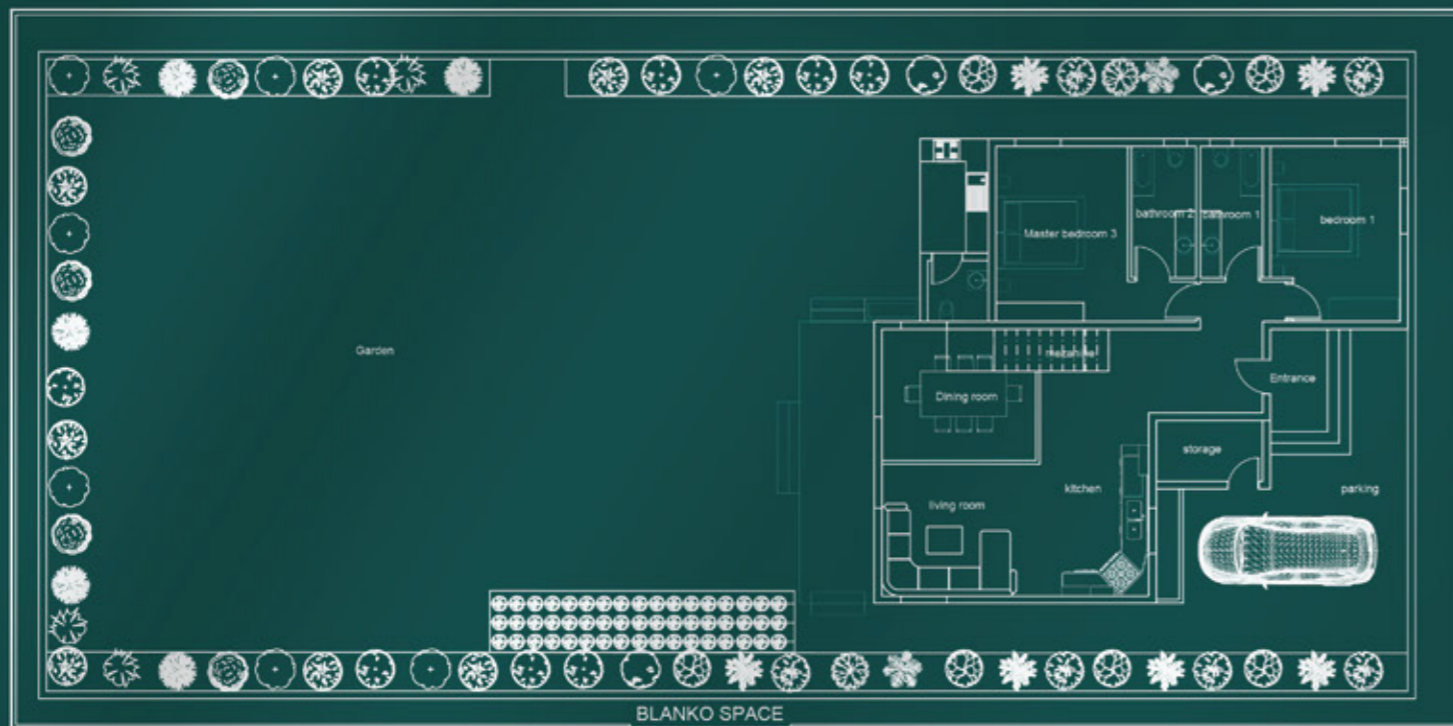
POULTRY FARM



AGRICULTURE



HOUSE PLAN



- Master bedroom
- 1 bedroom
- kitchen
- Living room
- Dining room
- Parking
- 2 bathrooms



ROSE MODEL
185 METER

IMMERSE YOURSELF IN NATURE

CATALOGUE



CATALOGUE

ENJOY THE GREAT NATURE



THE HARMONY OF NATURE
RIGHT AT YOUR DOORSTEP


YOUR INNER CALM AND
RELAXATION PLACE

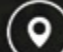


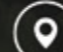


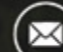
CAIRO REEF
مش مجرد مزرعة


CONTACT US

 0233793059 - 035 425757 - 01032001577

 178G Hadyek El Ahram - Giza

 Fkahany El-Nasr St1 United Towers - Kafr Abdo

 Info@cairoreef.com

 www.cairoreef.com